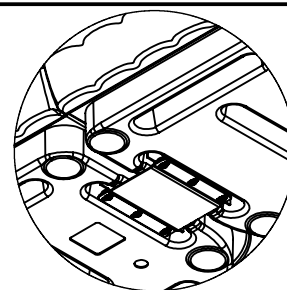




Ripple Ganging Assembly Instruction

Ganging Kit Numbers
C011-065



www.norix.com • TEL 800 234-4900

Assembly Notes: Norix is not responsible for any damage due to improper installation. If your shipment does not match the parts list, please contact Norix Customer Service at 800-234-4900. Norix reserves the right to modify design specifications at any time without an obligation to owners of previously sold products.

Important Note: Read through the instructions first and familiarize yourself with all of the steps. If you have any questions, please call Norix Customer Care before proceeding. Norix is not responsible for damage to components due to improper installation.

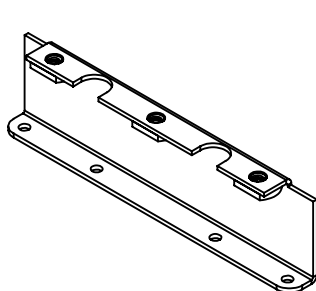
Tools Needed

Low RPM Variable Drill

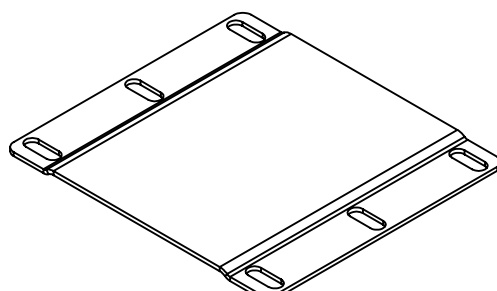
Pin in Torx Bit, T-20 (Included)

Pin in Torx Bit, T-25 (Included)

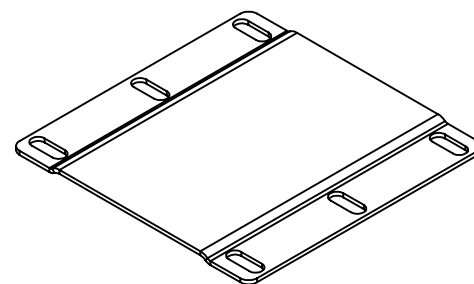
Pin in Torx Key, T-40 (Included)



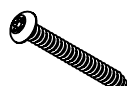
(A)
Ganging Support Bracket(2)
011-091



(B)
Sofa (Wide) Ganging Plate(1)
011-092



(C)
Loveseat Ganging Plate(1)
011-093



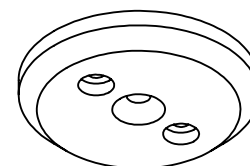
(D)
Screw #10-16 X 1.5"L,
Pin in Torx T-25,
Black Ox.(8)
021-144



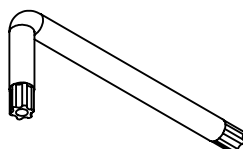
(E)
Screw 5/16"-18 X 5/8"L,
Pin in Torx T-40,
Zinc(6)
021-051



(F)
Screw #8-18 X 1"L,
Pin in Torx T-20,
Self Drilling SST (8)
022-016



(G)
Glide/Spacer
Ø 2-1/2" x 3/8" THK(4)
029-155



Pin in Torx Key, T-40 (1)
071-003



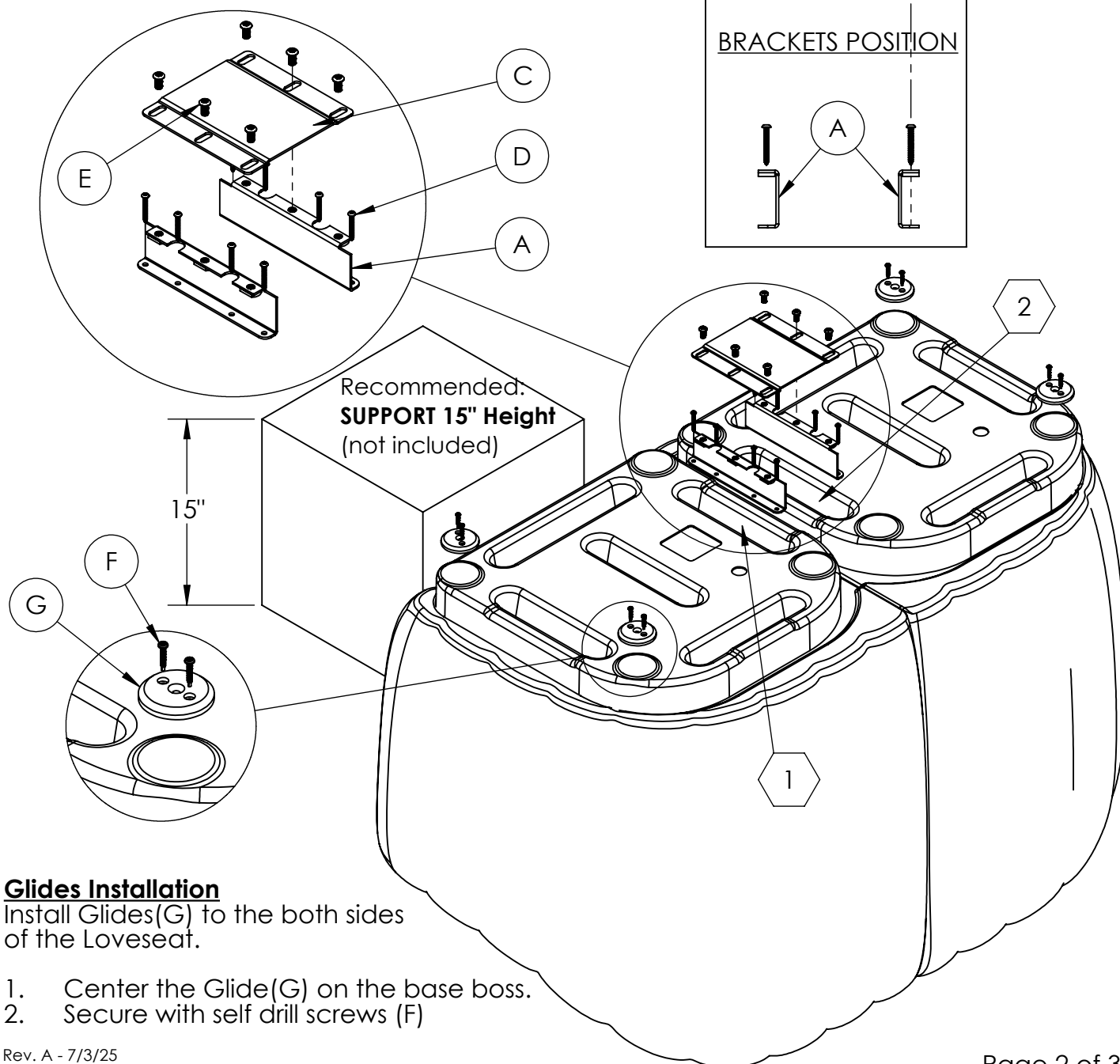
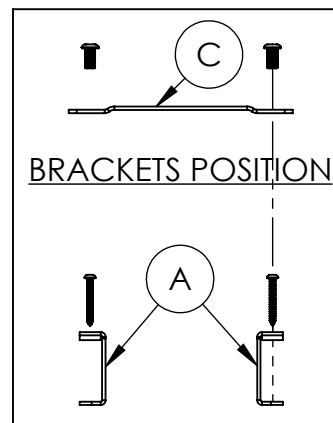
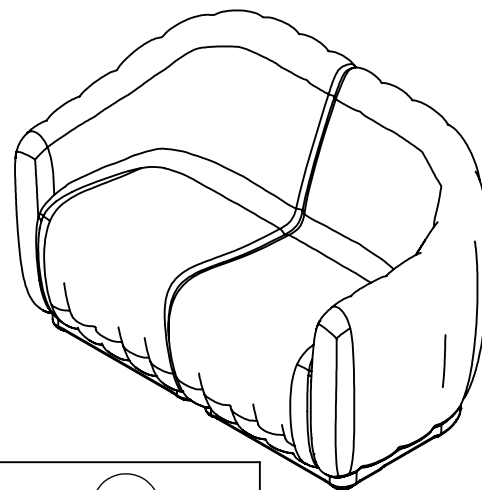
Pin in Torx Bit, T-25 (1)
071-007



Pin in Torx Bit, T-20 (1)
071-011

LOVESEAT GANGING SETUP

1. Place chairs in an upside down position. Recommend to use 15" high support
2. Remove screws from pockets #1 and #2.
3. Install the support brackets(A) into the pockets in direction as shown and secure with four(4) screws(D) each.
4. Position the Loveseat Ganging plate(C) over the Brackets(A) as shown and assembly using (6) 5/16" screws(E). DO NOT TIGHT.
5. Squeeze both chairs together and tight all screws(E).



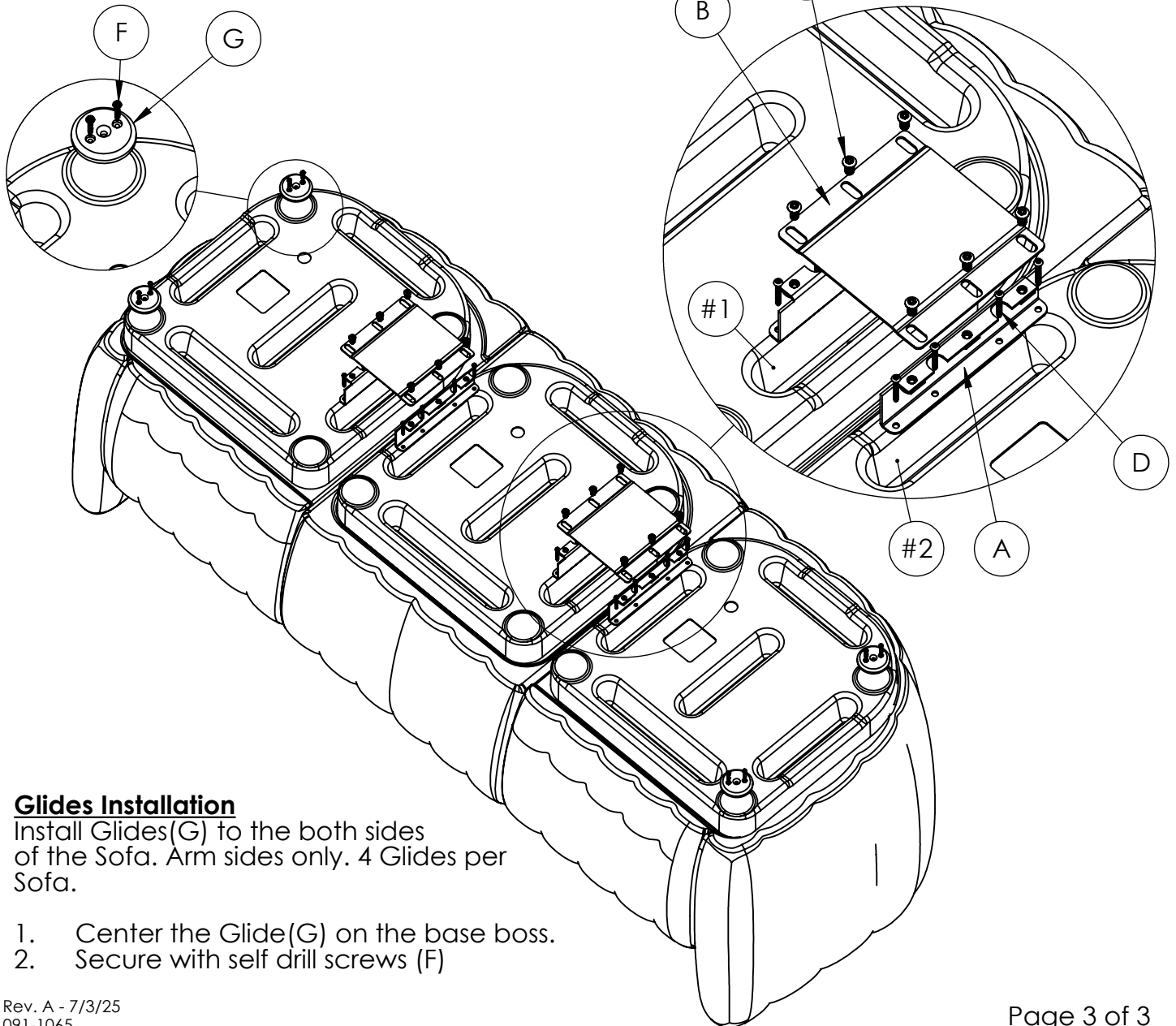
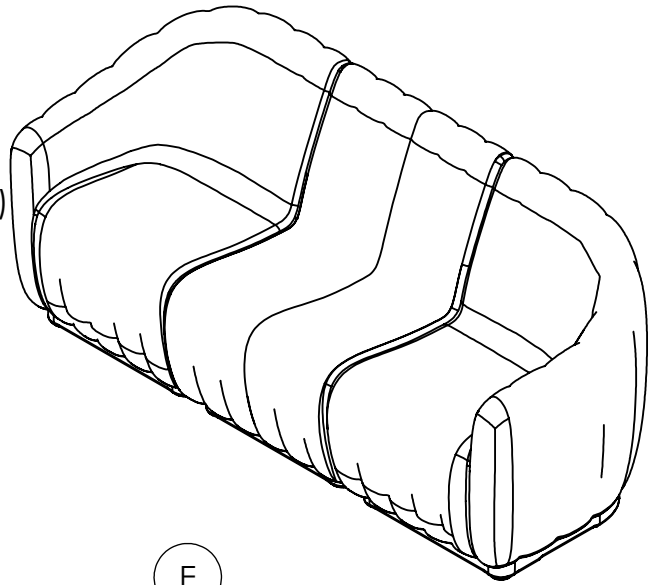
Glides Installation

Glides Installation:
Install Glides(G) to the both sides of the Loveseat.

1. Center the Glide(G) on the base boss.
2. Secure with self drill screws (F)

SOFA GANGING SETUP (Two(2) Ganging Kits Required)

1. Place chairs in an upside down position.
Recommend to use 15" high support
2. Remove screws from pockets #1 and #2.
3. Install the support brackets(A) into the pockets in direction as shown and secure with four(4) screws(D) each.
4. Position the Sofa Ganging plate(B) over the Brackets(A) as shown and assembly using (6) 5/16" screws(E). DO NOT TIGHT.
5. Squeeze chairs together and tight all screws(E).
6. Repeat the procedure to attach the next chair.



Glides Installation

Install Glides(G) to the both sides of the Sofa. Arm sides only. 4 Glides per Sofa.

1. Center the Glide(G) on the base boss.
2. Secure with self drill screws (F)